

Satyamev
LUXOR

4 BHK APARTMENT
5 BHK PENTHOUSE

Project by :

Satyamev Luxor

Head office :

B-501, Satyamev Complex, Opp. Gujarat High Court, S.S. Highway, Ahmedabad.



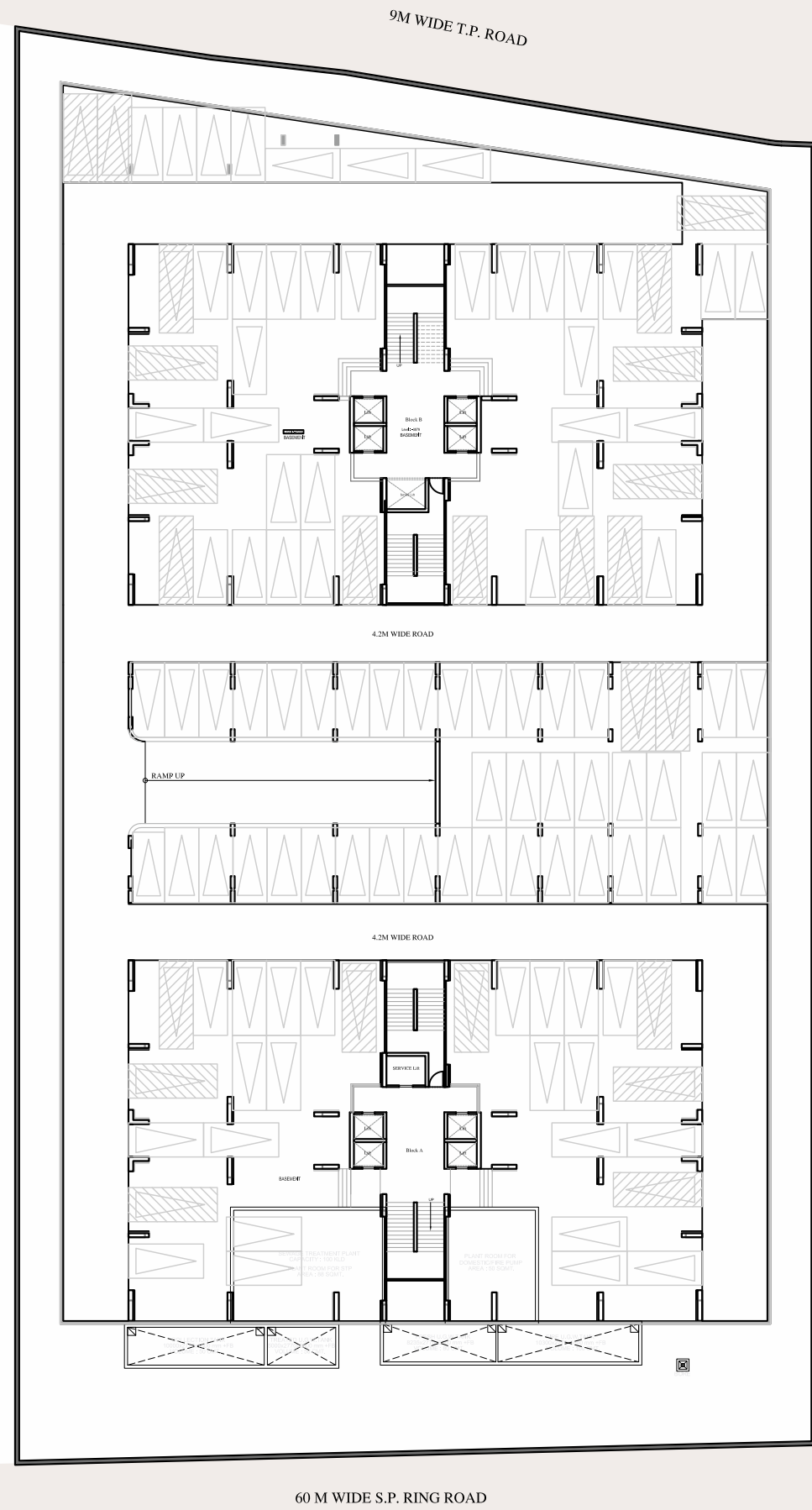
Satyamev
LUXOR

4 BHK APARTMENT
5 BHK PENTHOUSE

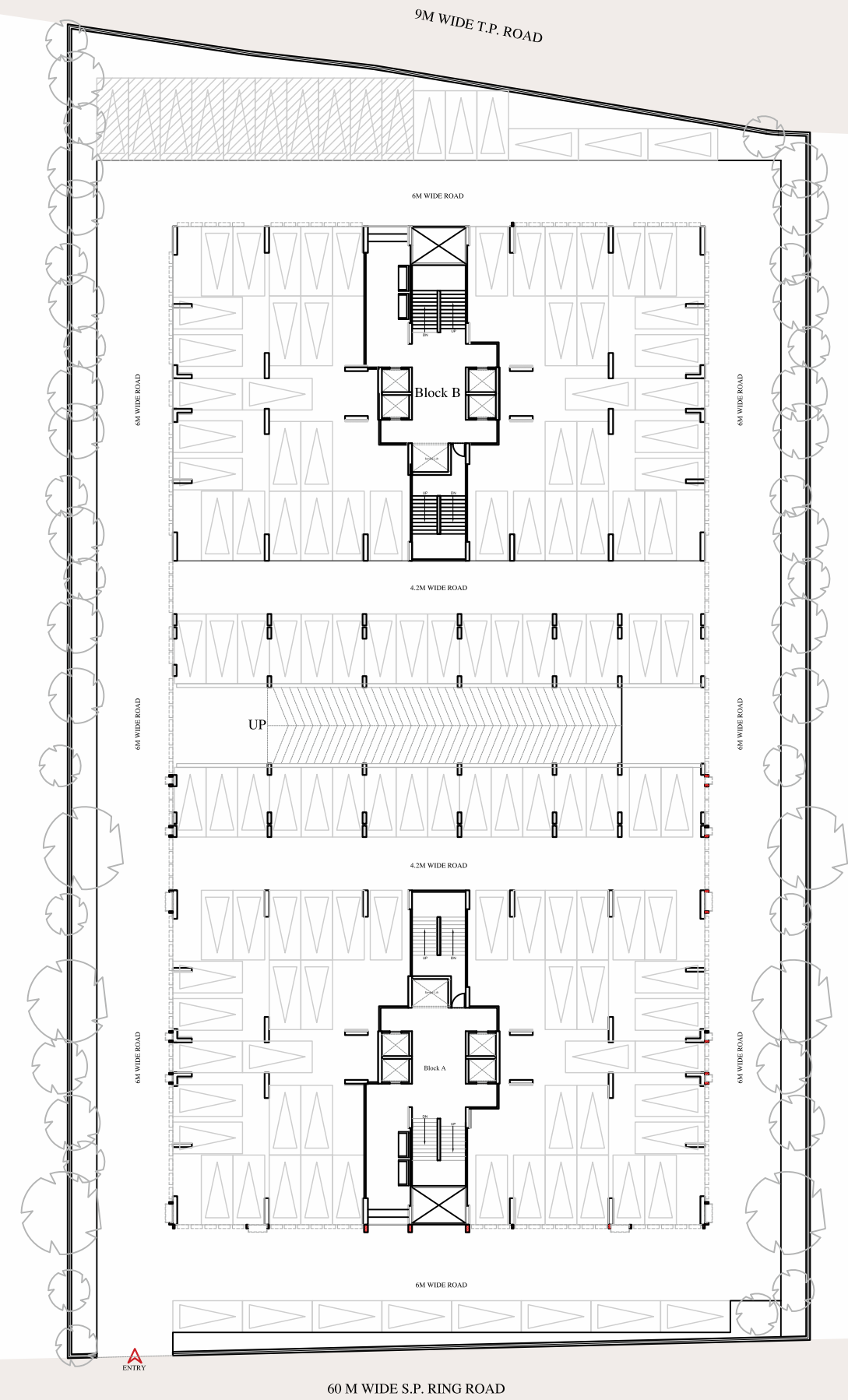


Satyamev
LUXOR

4 BHK APARTMENT
5 BHK PENTHOUSE



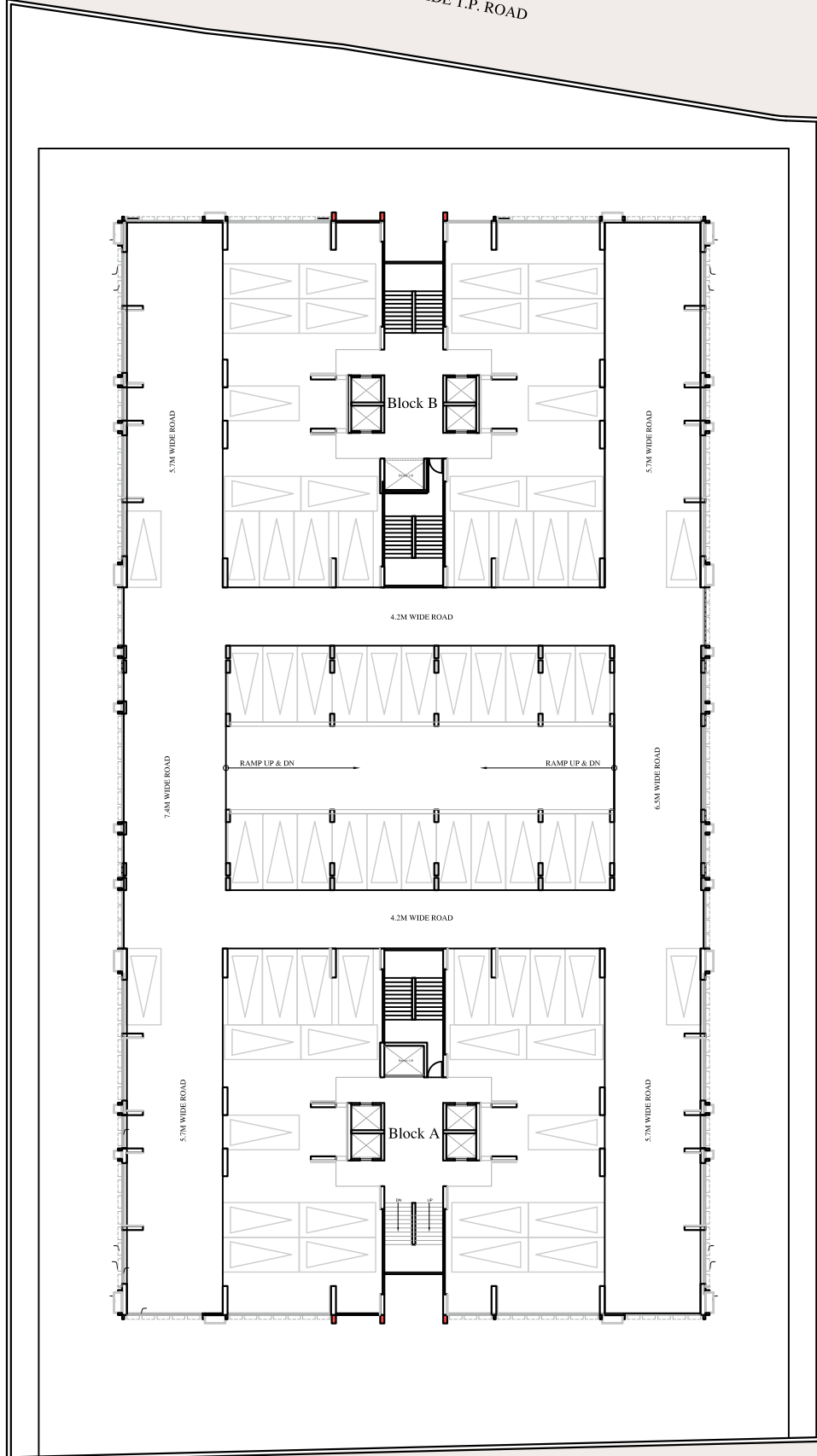
BASEMENT FLOOR PLAN



GROUND FLOOR PLAN



9M WIDE T.P. ROAD

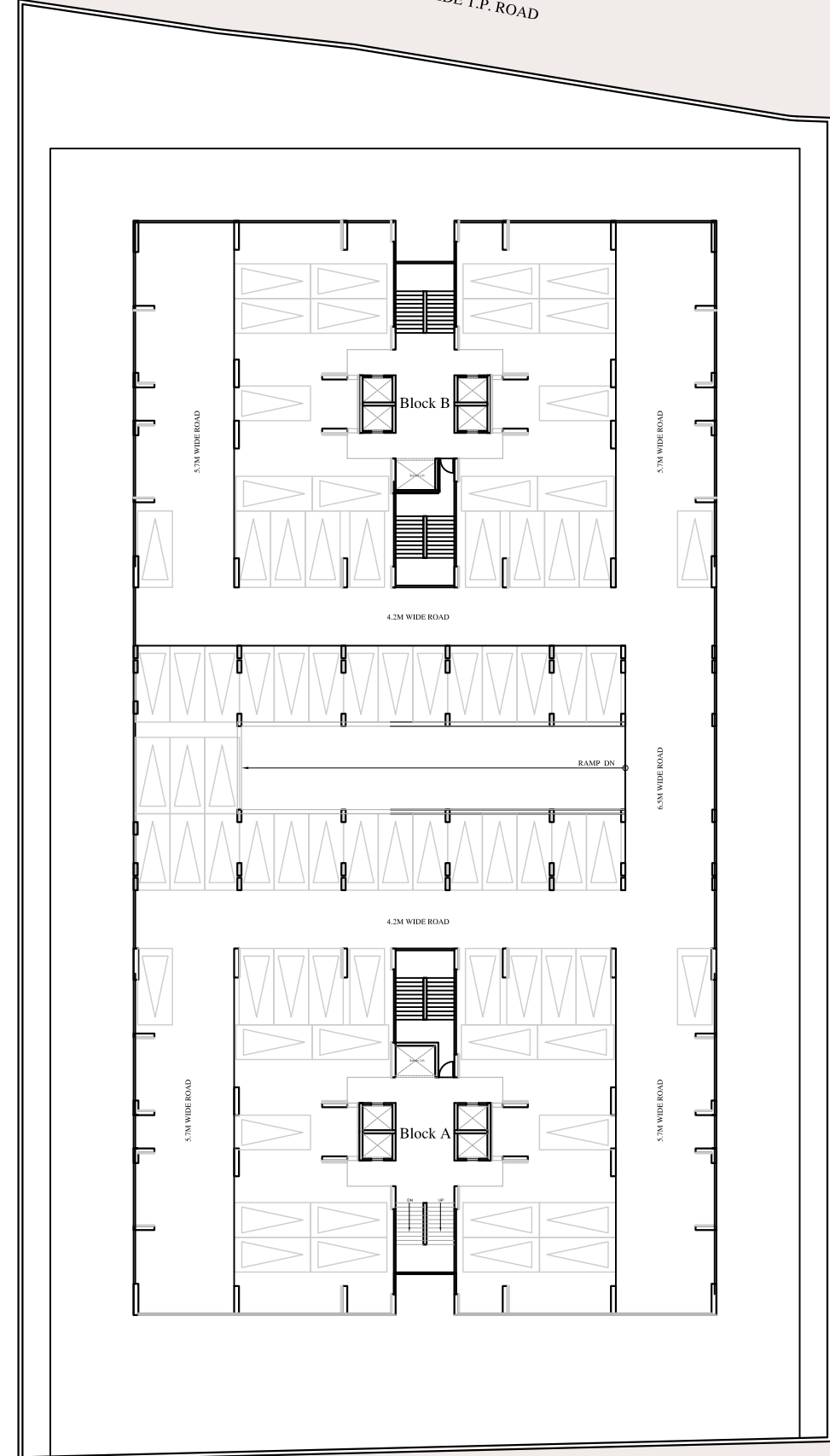


60 M WIDE S.P. RING ROAD

1ST FLOOR PLAN
PODIUM PARKING FLOOR



9M WIDE T.P. ROAD

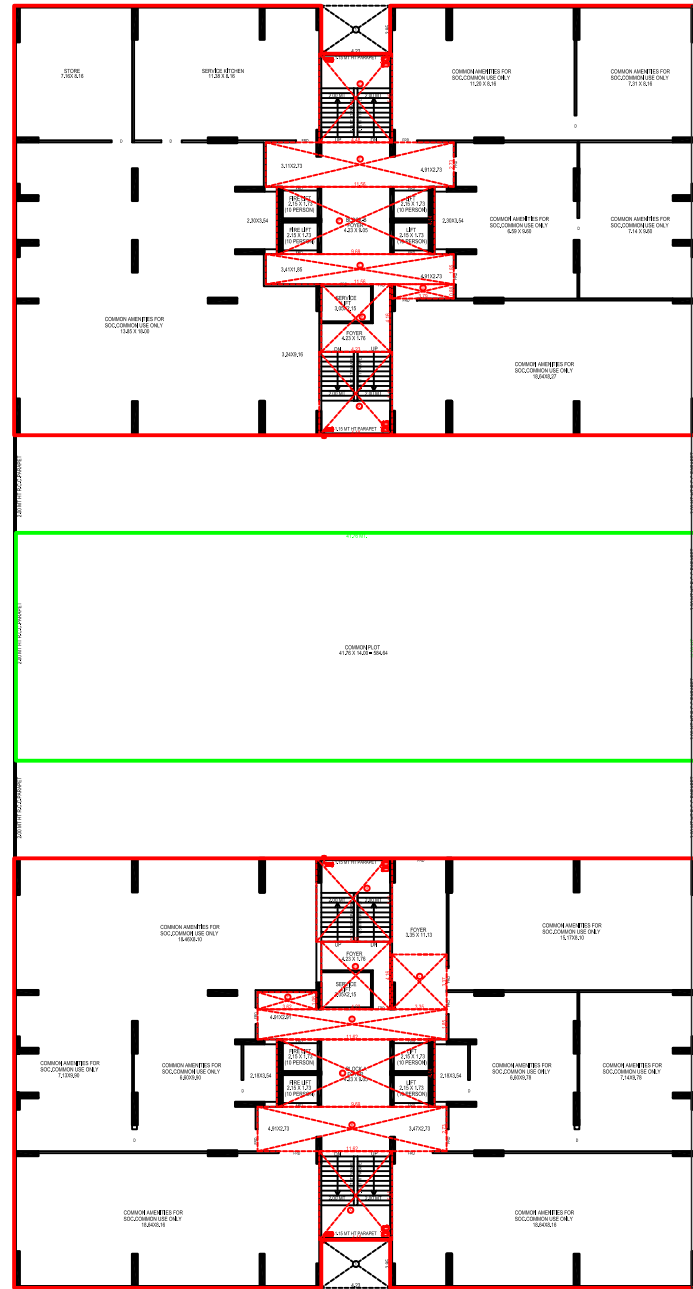


60 M WIDE S.P. RING ROAD

2ND FLOOR PLAN
PODIUM PARKING FLOOR



9M WIDE T.P. ROAD

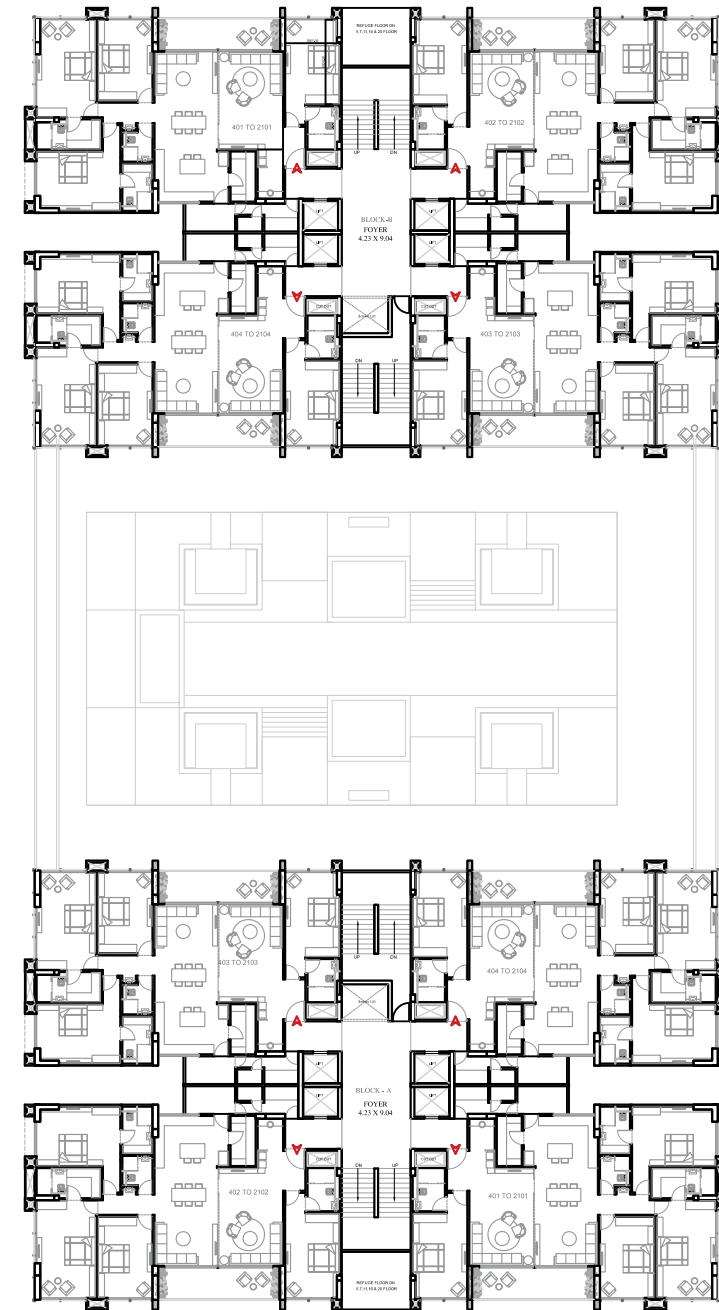


60 M WIDE S.P. RING ROAD

3RD FLOOR PLAN
AMENITIES FLOOR



9M WIDE T.P. ROAD

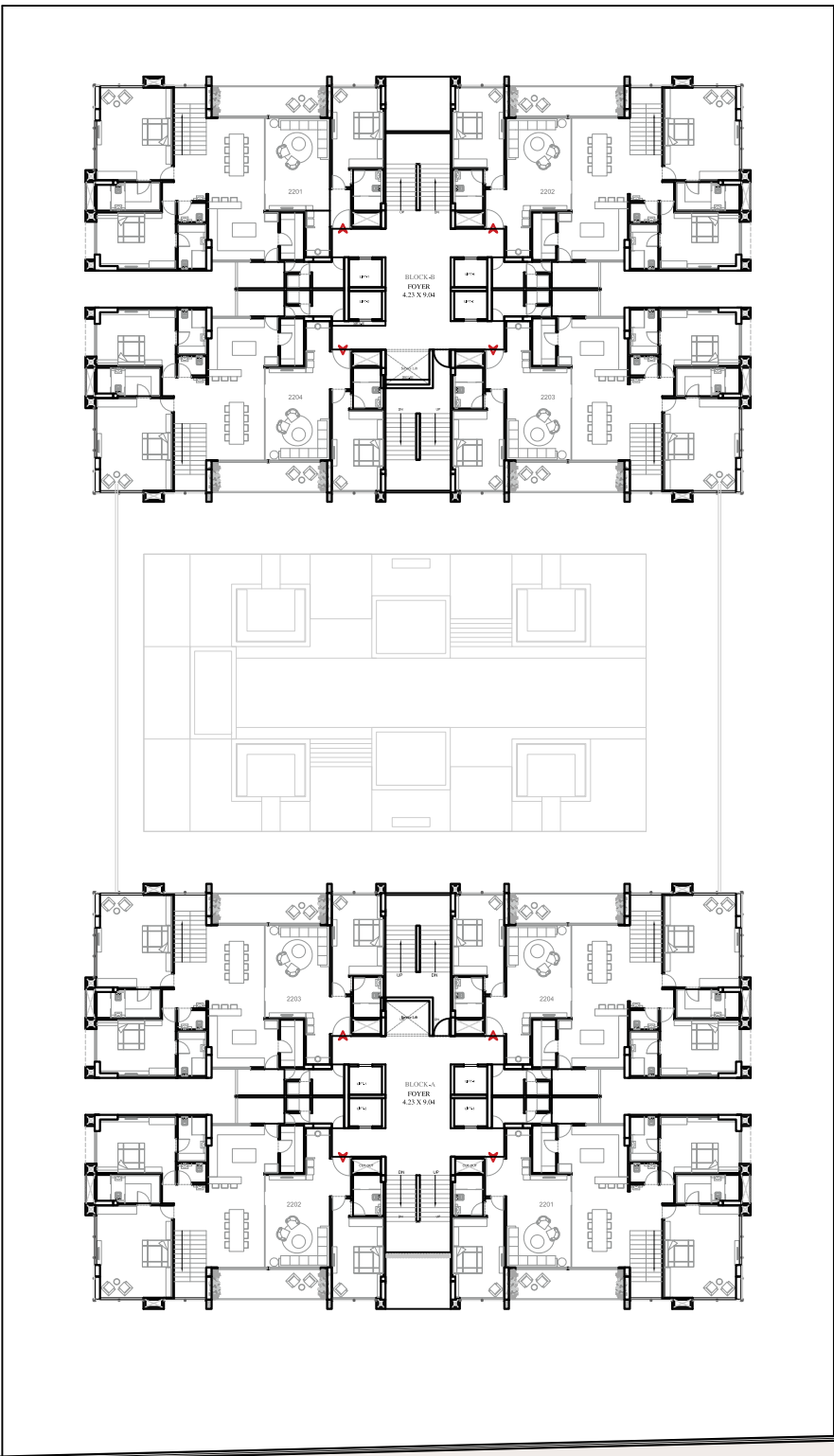


60 M WIDE S.P. RING ROAD

TYPICAL FLOOR PLAN
4TH TO 21ST FLOOR



9M WIDE T.P. ROAD

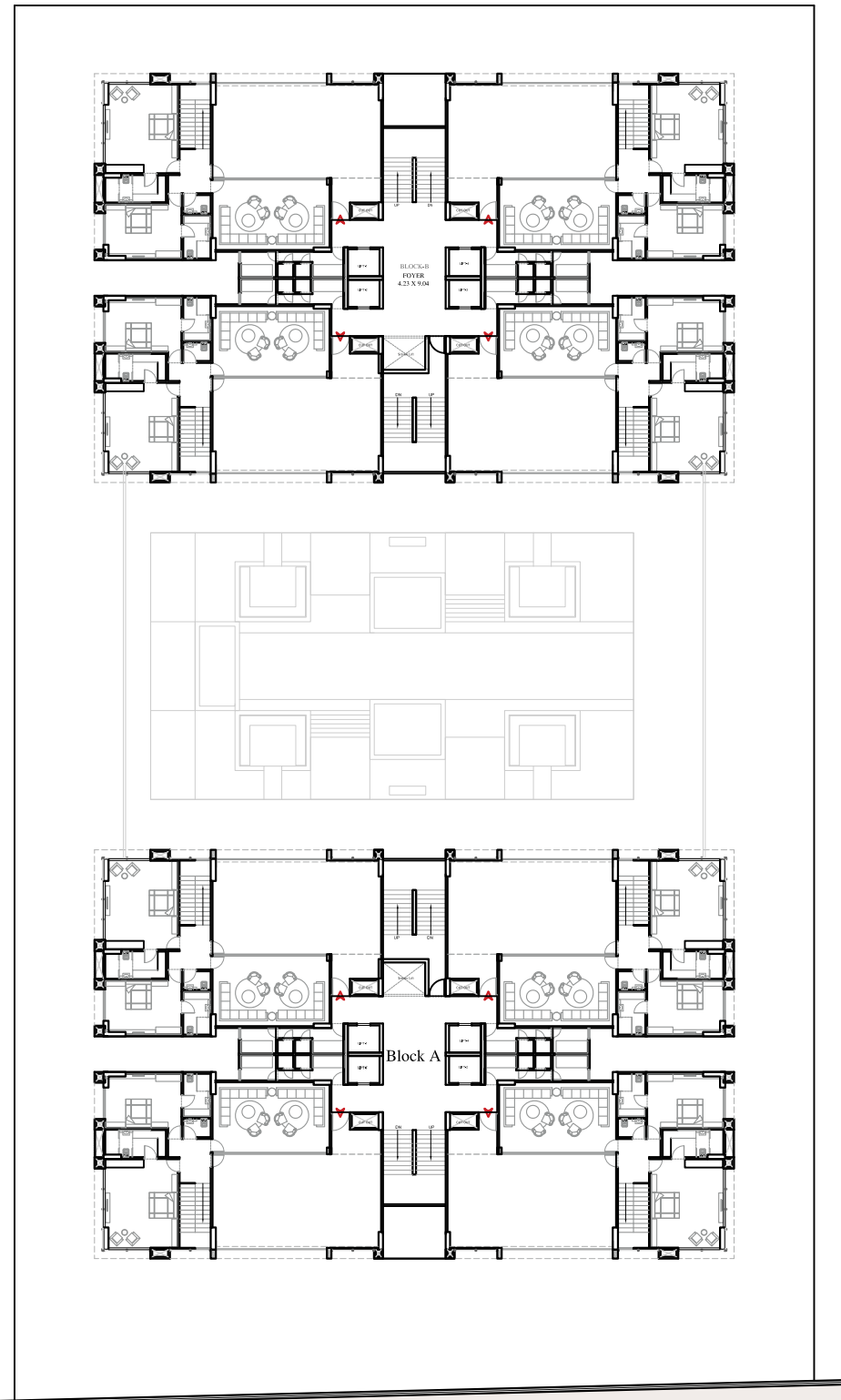


60 M WIDE S.P. RING ROAD

PENTHOUSE FLOOR PLAN
22ND FLOOR



9M WIDE T.P. ROAD



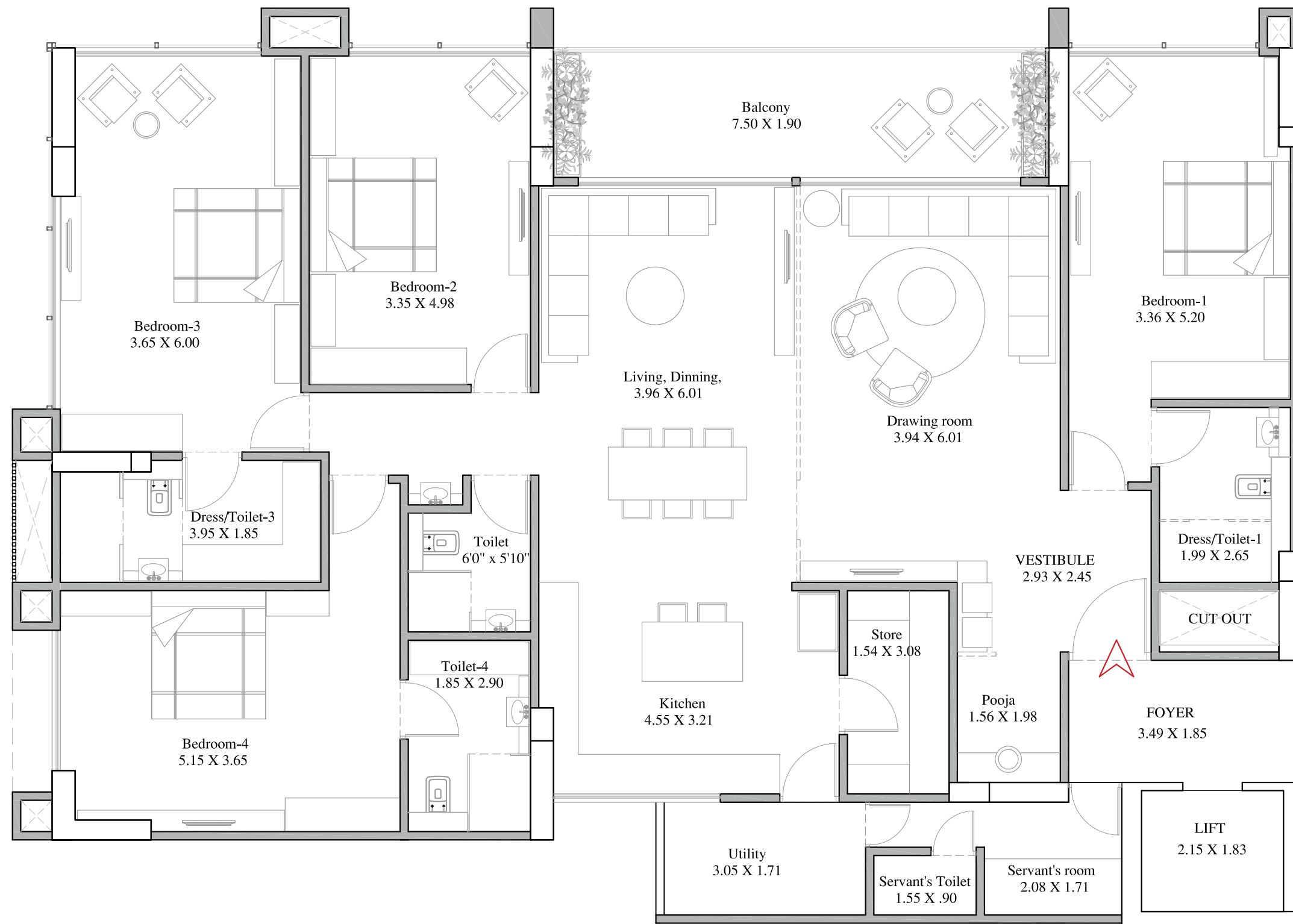
60 M WIDE S.P. RING ROAD

PENTHOUSE FLOOR PLAN
23RD FLOOR

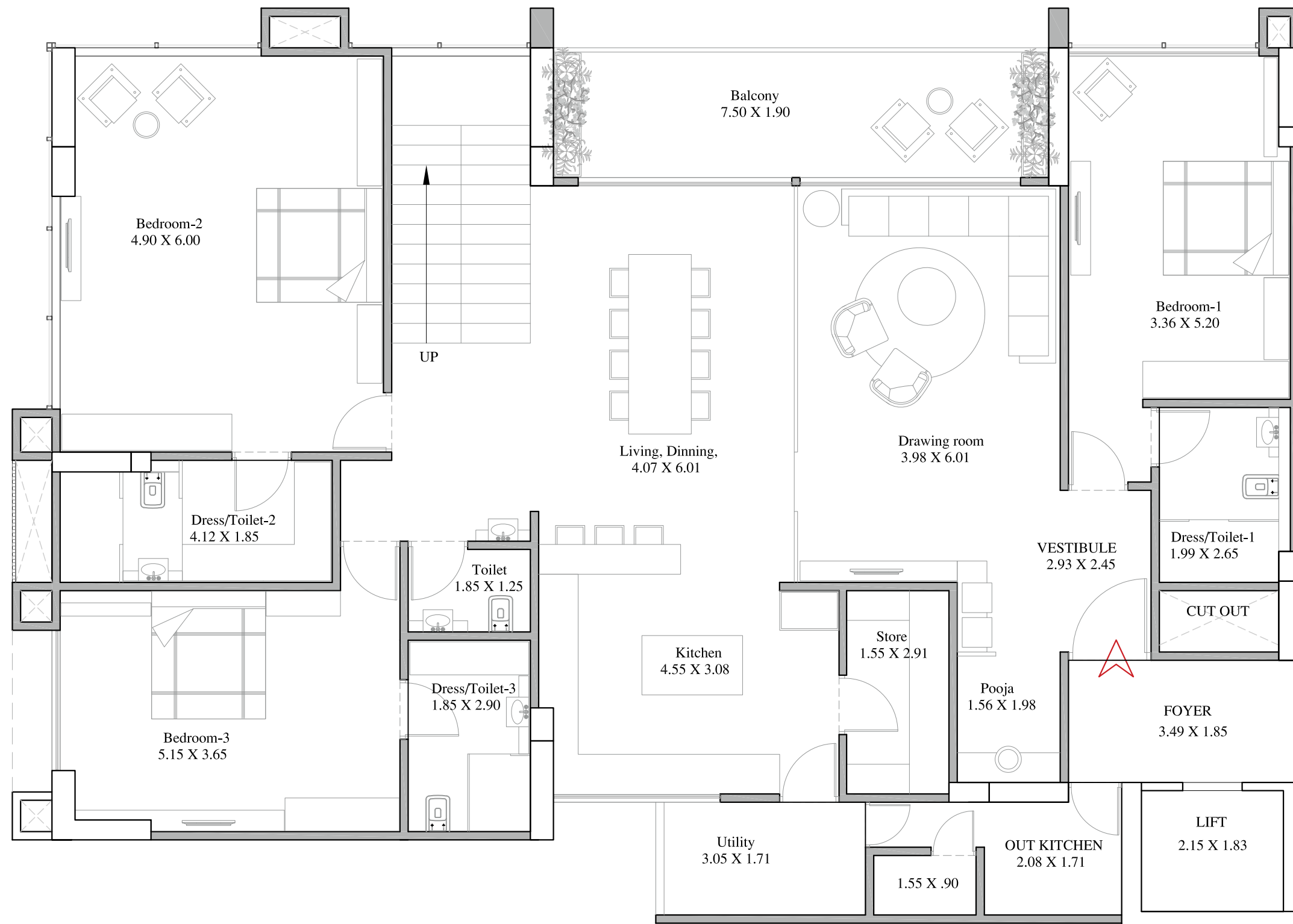


**TYPICAL
FLOOR PLAN**

**4TH TO
21ST FLOOR**

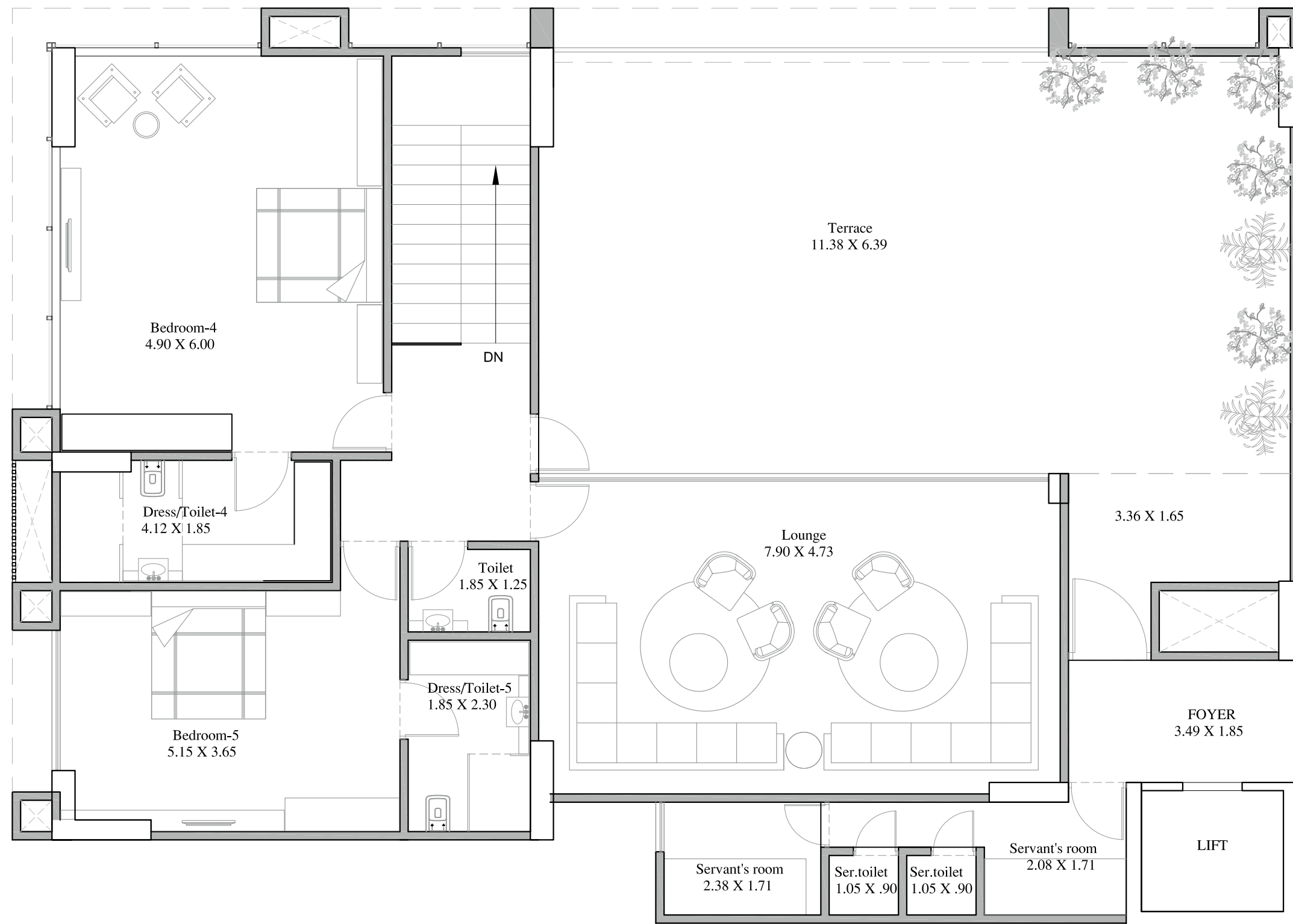


22ND
FLOOR PLAN
LOWER
PENTHOUSE



23ND
FLOOR PLAN

UPPER
PENTHOUSE



AMENITIES :



**PODIUM LEVEL
PARKING**



**GYM & YOGA
ROOM**



**INDOOR
GAMES**



LIBRARY



**KIDS PLAY AREA
(INDOOR & OUTDOOR)**



**SWIMMING
POOL**



**INDOOR MOVIE
THEATRE**



**BANQUET HALL /
MULTIPURPOSE HALL**



**SENIOR CITIZEN
SIT-OUT**



**PICK & DROP
ZONE**



**3 LAYER
SECURITY**



**ELEGANT LANDSCAPE
ON PODIUM LEVEL**



**WELL PAVED
WALKWAY**

SALIENT FEATURES :



**11' FLOOR TO
FLOOR HEIGHT**



**D.G.U. GLASS
ON FACADE**



**ALLOCATED
CAR PARKING**



**24 HOURS
WATER SUPPLY**



**POWER BACKUP
FOR COMMON AREA**



**AUTOMATED ELEVATORS
OF INTERNATIONAL COMPANY**

SPECIFICATION:-



KITCHEN

- Polished Granite platform with S.S. Sink with drainboard.
- Vitrified tiles dado up to the Lintel level on the walls above the kitchen counter.



PLUMBING WORK

- U.P.V.C. Water supply pipes & PVC pipes for Soil, Waste & Drainage systems.
- Hydro pneumatic system percolation wells as per the rooms.



BATHROOMS

- Branded vitrified tiles 600x600 mm on Walls up to lintel level & floor in all Bathrooms
- Granite basin counters in all bathrooms.
- Jaquar & equivalent bathroom & sanitary fittings.



WINDOWS

- European standard or equivalent quality Anodized Aluminium Sliding windows with D.G.U.glass on stone jambs



FLOORING

- Italian marble flooring in the Drawing room, Dining room & living room, kitchen.
- Wooden flooring in one Master Bedroom.
- 1200*600 mm Branded vitrified tiles flooring in all other Bedrooms.
- 600*600 mm branded vitrified tiles flooring in Wash area & Servant room, Toilet.



DTH CONNECTION

- All homes provided with TATA sky or equivalent connection.



DOOR

- Main entrance door 35 mm thick Flush door with Veneer/ Moulded skin on both sides.
- Other Doors are 35 mm thick Flush doors with both side colors.
- Matt Stainless Steel handles and locks.



WASH AREA

- Provisions for a R.O. Plant system, Geysers and Washing machine.



ELECTRICAL WORK

- Branded Modular switches.
- 3-phase concealed copper wiring with adequate number of points in all rooms.
- Provisions for TV/ Cable/ Telephone points in each room.
- All earthing.



INTERNAL & EXTERNAL FINISHES

- All Internal walls and Ceiling Plastered with Putty finished or POP Punning .
- Exterior walls will be Textured & Painted with 100% Acrylic based apex Paint.



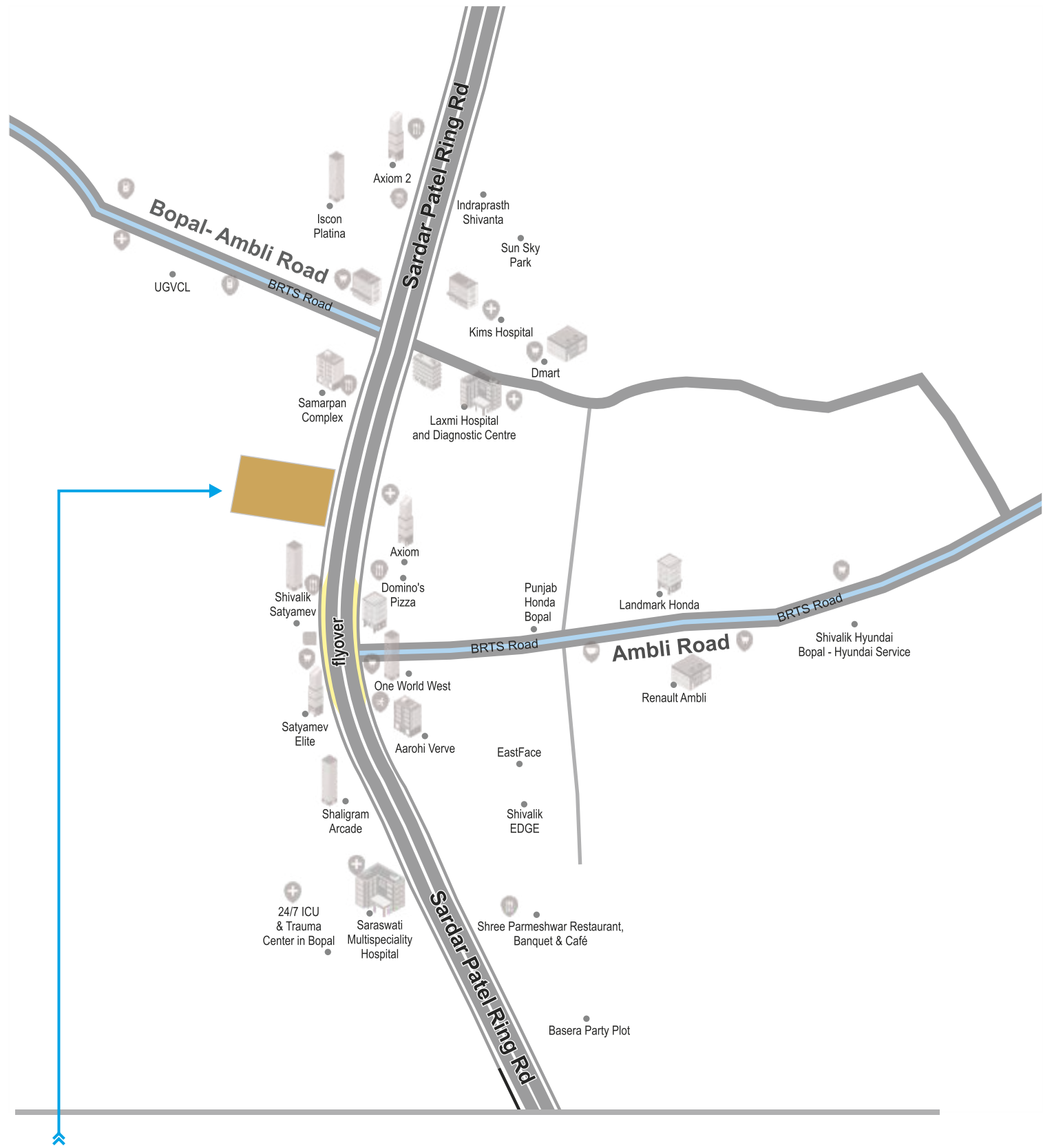
TELEPHONE / INTERNAL CABLES

- All homes with internal telephone landline and internet cable connections.



SECURITY

- Provide Video Door phone with Intercom facility.



Head office
 B-501, Satyamev Complex, Opp. Gujarat High Court, S.S. Highway, Ahmedabad.

+91 9737376561 | +91 99796 66261
 sales@satyamevdevelopers.com | www.satyamevdevelopers.com

TERMS :
 Right Reserved by the developers to make any changes in plan, elevations and other details which will be binding to all the members. | In order to maintain the aesthetics of the building at a very high level, installation of AC units will be permitted at the designated spots and nowhere else, changes which affect the elevation and structure system shall not be permitted for all time to come. | Encroachment. in any form, outside the defined units shall not be allowed. | Merchandise, articles, etc. cannot be stored / kept in common areas as defined by the project managers. | Only internal changes shall be made with prior permission and shall be charged extra in advance. | All dimensions shown in the plans are approximate, average, unfinished and subject to variations | G.S.T. & any other taxes will be extra. | Changes in services of individual units will not be permissible. | Payment are to be made in favour of " SATYAMEV LUXOR "

Satyamev
LUXOR

**BESIDE SHIVALIK SATYAMEV,
 AMBLI BRTS ROAD, S.P. RING ROAD, AHMEDABAD.**