



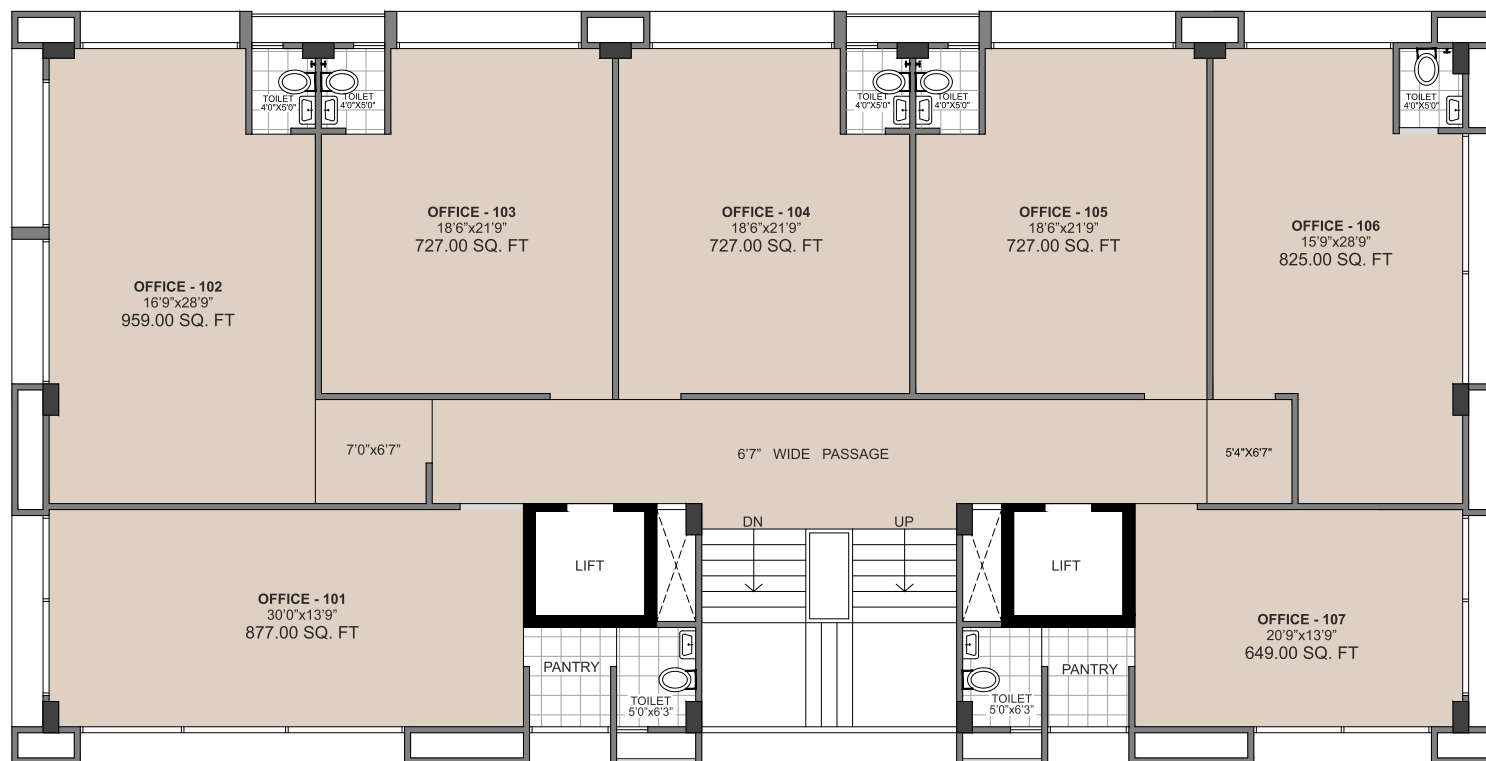
COLONNADE-II

CORPORATES & BUSINESS CENTER

BUSINESS BECOMES
BIGGER



Layout



Typical Floor Plan for Offices



Typical Floor Plan for Corporate House



COLONNADE-II
CORPORATES & BUSINESS CENTER

Specification :

- 24 hr on-alert security system.
- Provision of Emergency Light.
- High speed internet connectivity.
- Closed Circuit TV system setup.
- Back up power management.
- 3-tiered basement parking.

Rules & Regulations :

- Stamp duty, registration charges, legal documentation charges, service tax, maintenance deposit and Torrent charges shall be born by member separately.
- Any additional charges of duties levied by government/local authority during or after the completion of the scheme will be borne by the member.
- Internal changes shall be done with prior permission and shall be charges extra in advance.
- Charges in external elevation shall not be permitted.
- All right reserved by the developer for alteration / modification / improvements in specification and changes in dimensions and planning shall binding to all.
- All right reserved by the developer of building's basement and terrace.
- Polluted business is not allowed in premises.
- Irregular payment may lead to cancellation of booking.
- Any change directed by organizer will be binding to all members.
- This brochure and model are not part of any legal documents.
- All the dimensions / measurements given are unfinished and approximate.
- The photographs & artist impressions are for reference only. Actual property may vary from it.



**Shree
AmthiNath
Developer**
(Ashray Group)

SIDDHANT
Organiser

Project by :

AASHTHA ENTERPRISE

98250 81180 99788 44333



Site Address :

B/h. Rajpath Club, Nr. Maruti Celedron,
Opp. AUDA Garden, Off. S G Road,
Ahmedabad.